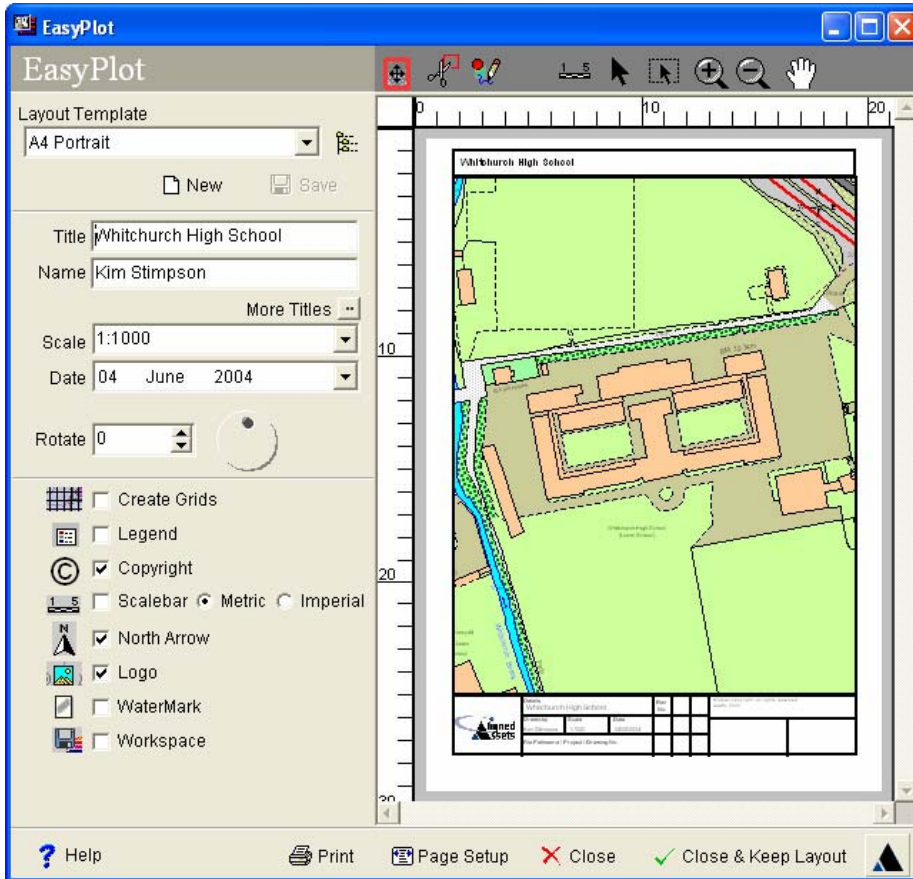


EasyPlot

Plotting with MapInfo made Easy



Mapping Your Business Vision



EasyPlot features:

- ▲ Your own templates
- ▲ Rotate
- ▲ Dynamic WYSIWYG text
- ▲ Grid / graticule
- ▲ Scale
- ▲ Metadata
- ▲ Cookie cutter
- ▲ Logos
- ▲ Batch printing
- ▲ Copyright watermark
- ▲ Save Layout as an image

"EasyPlot is the only tool for creating professional map presentations in seconds"

Mike Smith,
Reading Borough Council

"Has given simple easy to use quality map production facilities to everyone, with time savings all round"

Phil Hall,
Cardiff City Council

Format your map in an attractive template, displaying your map title, company logo, metadata, copyright information, and date printed with a few easy mouse clicks.

North arrows, scale bars, and labelled graticules are also easily and quickly added to your map. With EasyPlot you can even rotate your map and do batch printing!

**Eliminate
time
and tedium
in creating
layouts!**

TRY EASYPLOT TODAY

**DOWNLOAD OUR
FREE EVALUATION
VERSION**

<http://www.aligned-assets.co.uk/softwareproducts/productivitytools/easyplot.html>

Microsoft
CERTIFIED
Partner

ORACLE PARTNER

OS Ordnance
Survey
Licensed Partner

SPATIAL
TECHNOLOGY

Laser-Scan

Upgrade to EasyPlot

Call us to discuss a competitive upgrade from your old plotting utility.

www.aligned-assets.co.uk

EasyPlot

The simple to use plotting utility for creating professional layouts in MapInfo.

EasyPlot is controlled through a simple user interface, which allows you to customise your plot to your own requirements.

Customising Your Plot

With a few simple clicks on the EasyPlot interface you can:

- ▲ Print your map at your desired **scale** with an attractive **border**
- ▲ Show Easting and Northing **graticules**
- ▲ Add a **title block**, displaying your own **map title**, company **logo**, and the current **date**

Designing Your Own Layout Templates

EasyPlot is supplied with standard layout templates for page sizes from A4 Portrait to A0 Landscape.

Modify the existing templates or create your own customised templates using the Edit Template Tool.

With EasyPlot, you can easily adapt your existing layouts, or take advantage of some of the smart layouts supplied.

Advanced Options

Grids/Graticules: draw grids and Easting & Northing references on your map.

Rotate: rotate your map using the rotate dial or enter a degree.

Map Scale: choose from one of the standard scales listed or specify your own.

Scale Bars, North Arrows & Legends

Logo: add a logo or any raster image.

Copyright Watermark and Metadata

Adjust Plot Area: re-specify map extent.

Workspace: save your workspace.

Cookie Cutter: for legal purposes save snapshot files of the map data displayed in your layout.

Batch Printing: Automatically create and print individual maps of each record in your current selection. Each map will be zoomed to and centred on individual records. Text dynamically changes for the selected record.

**Contact us for more information.
See below for details.**

EasyPlot Licencing	
Evaluation Version	free
Single User Licence	£325
Please enquire about multi-user licencing for significant reductions!	
Maintenance - 20% of list price p.a.	

All prices exclude delivery and VAT, and are subject to change without notice.