

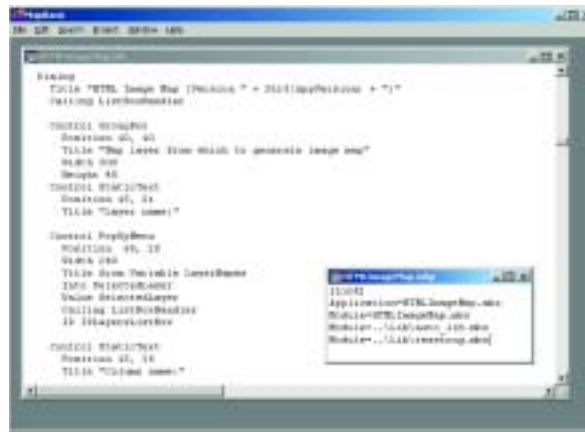
MapInfo® MapBasic®

THE APPLICATION DEVELOPMENT ENVIRONMENT FOR MAPINFO PROFESSIONAL®

MAPBASIC® IS AN IDEAL PROGRAMMING LANGUAGE TO CREATE CUSTOM MAPINFO APPLICATIONS, EXTEND THE FUNCTIONALITY OF *MAPINFO PROFESSIONAL*, AUTOMATE REPETITIVE OPERATIONS, OR INTEGRATE *MAPINFO PROFESSIONAL* WITH OTHER APPLICATIONS. *MAPBASIC* CONTAINS POWERFUL STATEMENTS ENABLING YOU TO ADD MAPS AND GEOGRAPHIC FUNCTIONALITY TO YOUR APPLICATIONS WITH ONLY A FEW LINES OF CODE. *MAPBASIC* PROGRAMS ARE EASY TO INTEGRATE WITH APPLICATIONS WRITTEN IN OTHER PROGRAMMING LANGUAGES SUCH AS VISUAL BASIC®, C++, POWERBUILDER® AND DELPHI. *MAPBASIC* IS A PROVEN LANGUAGE WITH HUNDREDS OF THIRD-PARTY APPLICATIONS ON THE MARKET.

FEATURES

- ▶ Customize Applications—Powerful BASIC-like language to create custom applications for MapInfo Professional
- ▶ Easy Connectivity—OLE and DDE support to easily connect to other applications
- ▶ Power Data Querying—embedded SQL with powerful data querying
- ▶ Extend Functionality—Geographic operators and functions help extend application functionality



OVERVIEW

MapBasic is a robust, structured, BASIC-like language enabling both the novice and experienced programmer to create powerful new desktop mapping applications. Whether creating applications for resale or designing applications for use within your own organization, *MapBasic* will prove an indispensable tool.

BUILD CUSTOM USER INTERFACES

As desktop mapping applications become more widespread in organizations, the need to build custom applications becomes greater. Custom programs deliver powerful features in an easy-to-use package as the power of desktop mapping can be focused on the particular task. *MapBasic* can customize menus, tool bars, and dialogues to make turnkey solutions and solve specific business tasks.

INTEGRATE MAPINFO PROFESSIONAL

Desktop mapping is most useful when integrated with other business tools. *MapBasic* supports the ODBC database connectivity standard for connecting to databases. It supports OLE automation and DDE so you can easily communicate with other applications. For example, using Integrated Mapping techniques, you can integrate a map window into your Visual Basic application with only five lines of code.

EXTEND THE FUNCTIONALITY OF MAPINFO PROFESSIONAL

Unlike a scripting language, *MapBasic* is a procedural, event-driven, compilable programming language built around *MapInfo Professional*. The architecture allows you to create additional features such as adding a sophisticated model for planning cellular antenna locations. *MapBasic* has powerful built-in geographic statements and functions. A subset of the full ANSI structured query language (SQL) set is built-in so you can use industry-standard commands to manipulate data.



EASY TO LEARN

Built on BASIC, *MapBasic* has familiar functions and statements. See *MapBasic* commands being generated as you use *MapInfo Professional's* menus—or try out your own commands. This allows you to easily learn *MapBasic* commands and even cut and paste them into your application.

DEVELOPMENT ENVIRONMENT

MapBasic is a compiled language so programs you create are run inside *MapInfo Professional* or special *MapInfo* runtimes.

The development environment provides a text editor used to write programs or, if you prefer, you can use any other editor.

MapBasic has facilities to handle significant programming efforts. It supports project files allowing you to compile and link separate modules.

STATEMENTS AND FUNCTIONS

The *MapBasic* language contains over 300 statements and functions including:

Flow control- Looping, branching sub-procedures, user-defined functions, event handlers, error handling.

Connectivity- Call routines from DLLs. Communicate with other applications using DDE. Control *MapInfo Professional* using DDE or OLE Automation. Access remote data sources through ODBC.

User Interface- Create new menu bars, menus or menu items, remove items from existing menus. Create or modify buttons on tool bars. Create custom dialogue boxes with text boxes, drop down lists, buttons, check-boxes, radio buttons, style pickers, select boxes. Show or hide standard windows, control events on selection, map window changes, window closure, window focus change, button push, or application termination.

Variables- Local, global, numeric, string, logical, dates, and object variable types: arrays and custom data structures.

Table and File Manipulation- Use Excel, Lotus® 1-2-3®, xBASE and ASCII files directly. Built-in SQL commands to query, sort, aggregate, join, and create derived data. (Supports select statements with FROM, WHERE, ORDER

BY, GROUP BY clauses with sub-selects). Supports equi-joins and geographic joins. Commit changes, roll-back changes. Connect to data via ODBC. Open, close, read, write to ASCII and binary files.

Functions- String, data conversion, math, date, time, and geographic functions.

Geographic object manipulation- Create points, lines, polylines, text, polygons, buffers, etc. Edit and manipulate objects including reshape, object conversions, split, combine, erase. Calculate area, perimeter, length, centroid, area overlap. Modify object styles. Display maps from multiple layers, control display settings, create thematic maps. Find and geocode objects. Supports multiple coordinate systems.

VERSION COMPATIBILITY

Newer versions of *MapInfo Professional* can run applications created with older versions of *MapBasic*, however, new features in *MapInfo Professional* can only be accessed with a matching version of *MapBasic*.

SYSTEM REQUIREMENTS

MapBasic requires *MapInfo Professional* and is compatible with Windows 2000, NT 4.0, 98 and 95.

