



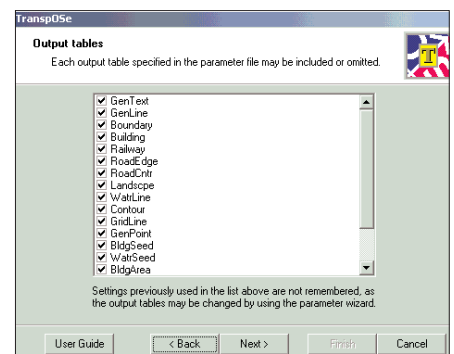
TransPOSe™ is a powerful stand-alone translator application which will allow you to convert National Transfer Format (.NTF) files into a variety of GIS formats for use within the mapping software of your choice. TransPOSe™ is developed by Dotted Eyes and resold in Ireland by ESBI Computing.

TransPOSe's intelligent design converts all vector products from Ordnance Survey Ireland (OSI), Ordnance Survey Northern Ireland (OSNI) and Ordnance Survey Great Britain (OSGB) and includes a generic processor for any .ntf file in Level 1, 2 or 3.



Key Features

- Data conversion output files include MapInfo .tab (table), .mif/.mid (MapInfo Interchange Format), ESRI .shp (shape), AutoCAD .dwg (drawing) or .dxf (drawing exchange format)
- Multiple .ntf tiles (up to national cover) can be processed in one batch
- User has full control over the output layers, columns of attribute data, symbols and styles
- Can merge the data across tile edges
- Fully configurable by means of a parameter file, which makes it very flexible. Several parameter files may be saved



Benefits

- An efficient stand alone .NTF translator application
- User friendly interface
- Option for the output tables to be split into separate tables using the parameter file rules, or one table per tile
- Option of the output structure to store all tables in the folder for output files or to divide the output into sub-folders, replicating the input structure
- Option to introduce top-level folders for each table type, prefix table names with tile names and create seamless tables

